

- COUNTY LINE
- CORPORATE LIMITS
- STATE TRUNKLINE
- COUNTY PRIMARY
- COUNTY LOCAL
- ADJACENT COUNTY
- CITY OR VILLAGE STREET

PRIMARY ROAD SYSTEM IS 16.79 MILES
 LOCAL ROAD SYSTEM IS 25.39 MILES

I HEREBY CERTIFY THAT THE ROADS SHOWN HEREON BY SYMBOL OR IN RED AS PRIMARY ROADS AND THOSE SHOWN HEREON BY SYMBOL OR IN GREEN AS LOCAL ROADS ARE IN USE AND ARE UNDER THE JURISDICTION OF THE COUNTY ROAD COMMISSION.

CHAIRMAN DATE

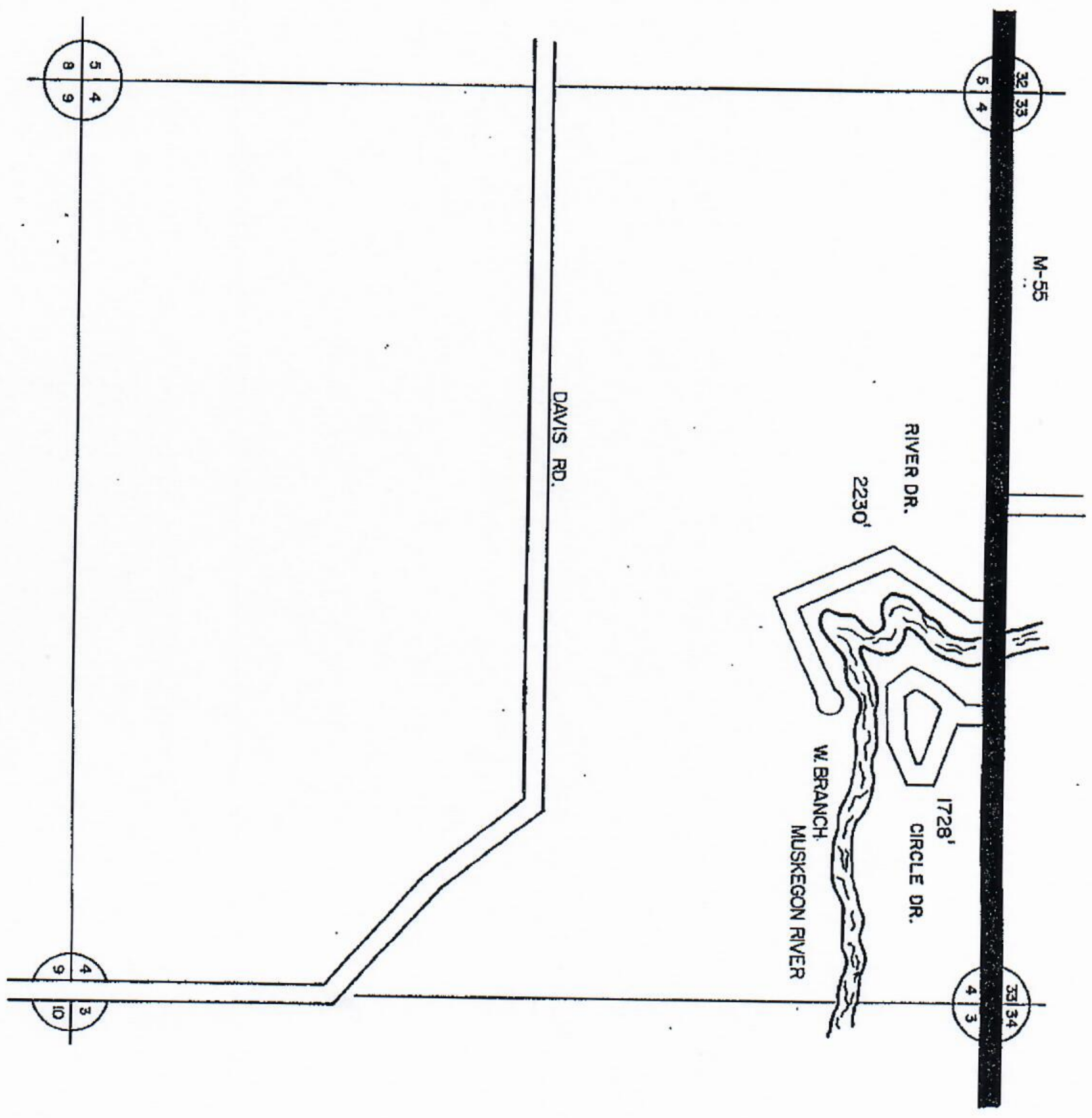


SCALE 0 1 MILE
 One Inch Equals 3000 Ft.

Prepared by
 BUTTERFIELD TWP
 T22N-R5W

13	14	15	16
9	10	11	12
5	6	7	8
1	2	3	4

RIVER DRIVE SUBDIVISION



COUNTY LINE
 STATE TRUNKLINE
 COUNTY PRIMARY
 COUNTY LOCAL
 ADJACENT COUNTY
 CITY OR VILLAGE
 STREET

TOTAL FEET 3958 EQUALS 0.75 MILES

I HEREBY CERTIFY THAT THE ROADS SHOWN HEREON BY SYMBOL AS LOCAL ROADS ARE IN USE AND ARE UNDER THE JURISDICTION OF THE COUNTY ROAD COMMISSION.

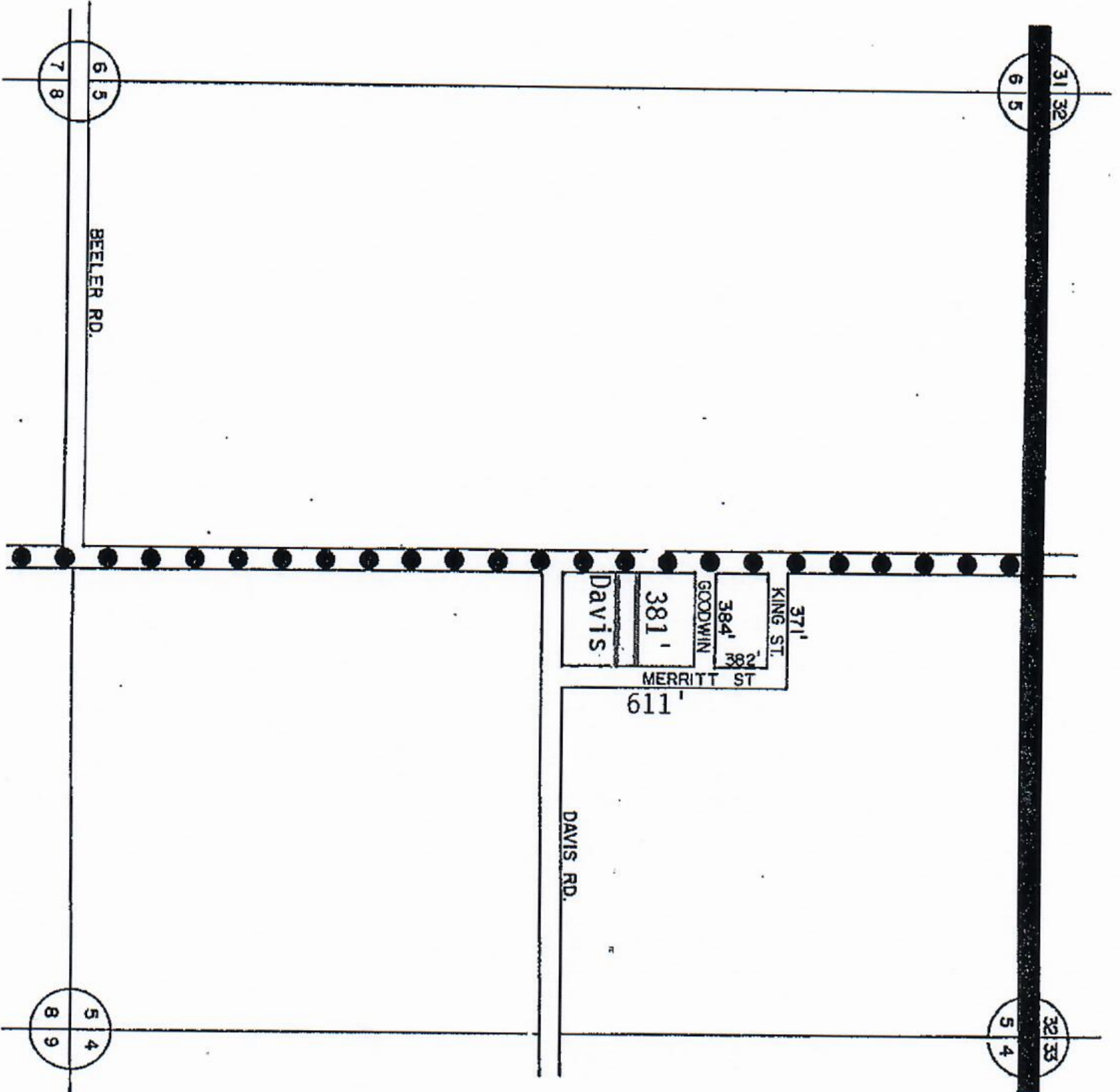
CHAIRMAN _____ DATE _____



SCALE 0 600 1200 FT.
 ONE INCH EQUALS 600 FEET

TOWNSHIP BUTTERFIELD
 SECTION 4 T22N R5W
 COUNTY MISSAUKIE

VILLAGE OF MERRITT

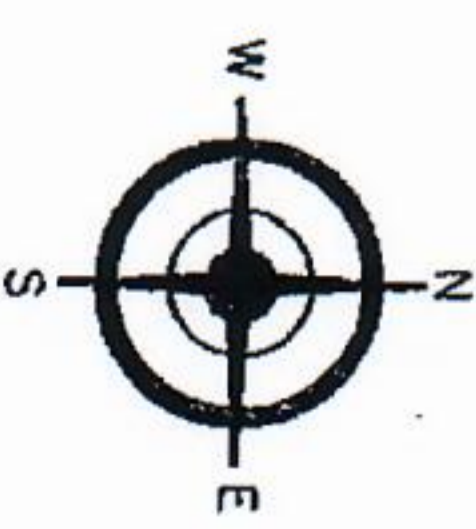


COUNTY LINE
 CORPORATE LIMITS
 STATE TRUNKLINE
 COUNTY PRIMARY
 COUNTY LOCAL
 ADJACENT COUNTY
 CITY OR VILLAGE
 STREET

TOTAL FEET 2129' EQUALS .40 MI.

I HEREBY CERTIFY THAT THE ROADS SHOWN HEREON BY SYMBOL AS LOCAL ROADS ARE IN USE AND ARE UNDER THE JURISDICTION OF THE COUNTY ROAD COMMISSION.

CHAIRMAN _____ DATE _____



SCALE 0 600 1200 FT.

TOWNSHIP BUTTERFIELD
 SECTION 5 T22N R5W
 COUNTY MISSAUKEE